

eximcorp formwork

YOUR RELIABLE PARTNER FOR FORMWORK SOLUTIONS



HISTORY

Our Business is to add value to the businesses of our principal suppliers, Customers and our users and thus serve our stakeholders, society and the nation in keeping with our vision and mission.

Eximcorp India Pvt Ltd showcases the product of leading International Wood and Wood product businesses in Australia, Europe, Russian Federation, New Zealand and in Americas. Eximcorp India Pvt Ltd – has more than two decades of rich experience in dealing with Quality Wood and Wood product of top most brands from overseas.

With the above history & successful journey

so far in the Wood industry, We are now entering into the field of offering Formwork solution with range of products suitable to all type of construction projects, with no cap on the size of the project.



Sustainable wood products are the only survival.

Contribute to environment by saying 'NO' to wood products derived from non-sustainable forestry

BUSINESS TIE UP WITH PSK GROUP- THE RUSSIAN ENTITY

We offer solutions by having a technical tie-up with the well-established formwork company in Russia called PSK (Promstroi Kontract) to offer/provide ranges from Vertical to Horizontal formwork with solutions for any Reinforced Concrete Construction. The main products are manufactured and imported from PSK to serve a better-quality formwork material.

OUR FORMWORK ENGINEERING

- Our Engineering team is our strength. Our Engineering team is backed by a strong professional and experienced team aimed to give Economical/Optimal formwork solutions.
- On site support to transfer the schemes from the drawing board to execution at site.
- Keenly coordinating with your Architects, Structural consultants if required for formwork standardization to achieve faster cycles, to churn out the repetitions etc.





CLIENT SUPPORT

- **Architectural & Structural Design Consultant** – support in selection of right formwork which cater to the needs of smooth finish with proper structural stability - to make their dreams into reality - in terms of Shape, Size, Quality, Finish etc.
- **Contractors** – Advise & provide concept drawing along with formwork cost & boq during the tender stage which is also one of the key factors to win the project. Thereafter, a full fledged engineering services with detailed shop & assembly drawings, boq, site assistance to support and train your project team.
- **PMC's & Project owners** – PMC's & Project owners – Help them in Formwork cost & Estimation and understanding of time & cycle time relevant to Formwork.

VALUE ADDED SERVICES ○○○

We can work with your existing formwork inventory to suit your project specific needs. This service will definitely bring value addition and better utilisation of your inventory in order to optimise and achieve within the accepted formwork cost in your project. Eximcorp is specialized in these services.

STOCKYARD ○○○

We have a full-fledged stockyard with an operation team to control the stocking & delivery activity. Our Yard is placed in Chennai, Kandla & Delhi and we are also in the process of developing branch yards in major Metro cities.



Wall & Column Solutions

eximcorp - mck Modular Panel System

Technical Specifications ○○○

- eximcorp - mck is a light weight modular panel system which has inbuilt plywood. it enables the project site to use the product immediately and also will increase the speed of shuttering & de-shuttering activities. It does not require any panel making activity at site.
- The size of the main elements:
Height-1250mm, 1500 mm, 2400mm & 3000mm;
Width- 200, 250, 300, 450, 500, 600, 750mm
- Designed Concrete Pressure of Wall panels =50 kN/M²
- Designed Concrete Pressure of Column panels =80 kN/M²
- More than a hundred-fold use plywood deck formwork with one hand is not uncommon. The deck you can flip to the other side. Manufacturing precision ensures high quality and simultaneously reflects in the concrete surface.





Wall & Column Solutions

eximcorp - classic formwork ○○○

exim classic is a design & suit type of formwork using our H20 beams and other connecting parts. The system shall be designed based on the structure requirement with our standard & customized parts through the bill of quantities taken off of components and from the formwork drawings

- Panels have extra provision to achieve verticality and the concrete pressure is sustained by high strength tie system.
- The high strength tie system can be through tie system or lost anchor system depending on the structure.
- The entire panel, along with the platform and alignment system can be shifted using cranes, as a single unit. In the absence of a crane the panels can be dismantled and handled separately by manual operations.
- Exim classic will be the right solution for very large, complicated shape, hard specifications, more heights in a single casting step applications, etc.
- When it comes to Fair face finish projects, Exim classic is the right system that brings the reality to the architect design with uniformed tie holes & grooves patterns and even more.



Slab & Beam Formwork

Horizontal Formwork applications: Slab & Beam formwork applications classified from type of project & structures. We have various formwork solutions for slab & beam structures. Residential & commercial building

- Exim-Flex formwork with H20 timber beam
- Exim-Table form with H20 timber beam
- Exim-Table form with Alubeam Girder
- High shoring slab system



Flat Slab Applications

eximcorp - table formwork ○○○

When it comes to flat slab applications from a building projects, Exim-Table form will be the right option and this system helps to decrease the floor cycle time.

Exim Corp offers Exim Table form with the Primary & Secondary combination such as H20 Timber beams, Alu beams, Steel waling etc.

During application, combination of Flex or Cuplok system also will be used for infill or even Column drop zones depending on Client's requirement and their stock availability.

In addition to this, there will be an operational device such as transport fork, shifting trolley for horizontal & vertical shifting of the tables. This is a crane handled system and tower crane is most suited for the vertical shifting.



eximcorp - flex formwork ○○○

To form a slab & beam of residential or commercial building, we select our versatile H20 timber beam to be used as the primary & secondary decking member with plywood finish.

Shoring is taken care by our high strength Floor Prop to suit different floor heights. Further, adding of other connecting components such as 4 Way Head, U head, Foldable Tripod to make it complete system.

Beam sides will be built through beam side support with its extension while beam bottom is supported by H20 beams and Prop system.

With the same H20 as Primary and Secondary combination, EXIM-CUP-Scaffold system basically having Cuplok System as Supporting towers is available to cater larger floor heights in Commercial and Residential Building.

eximcorp - HSS High Slab Shoring System

Heavy Slab Shoring system is widely used as staging for heavy floors at higher altitudes, and also serves as scaffolds in certain occasions. HSS frames are braced using standard bracings, forming the heavy duty tower system. Couplers and pins connect frames together ensuring verticality.

- Spindles provided at the bottom can be used to adjust height and level.
- Each HSS tower has an unmatched capacity of 25Mt and is ideal for handling heavy loads at unusual heights.
- The HSS Basic frames are available in heights of 0.9m, 1.2 m or 1.8m. The HSS Towers are forms a plan in two sizes 1525x1525 mm or 1525x2250 mm.
- The same HSS tower 1525 x 2250 mm towers can be converted into a stair tower system with additional components like landings, handrails etc.





Safety systems

eximcorp – safe ○○○

No one can deny the importance of the safety during the project execution. Exim provides safety solution with its protection screen system for any high rise project. The system is designed for building peripheral areas with tested bracket & cone system. The system will be operated through crane and self climb as well.

eximcorp - cup scaffold

- exim cup system can be used as Formwork Supporting towers and scaffolding.
- exim cup scaffold – Functional design with Simple connection.
- This system has been designed to meet the requirements of Construction and Housing sectors.
- All the components like Verticals, Ledgers come in Galvanised finish.
- Standard verticals comes in height 0.50m,1.00m, 1.50m, 2.00m, 2.50m and 3.00m.
- Standard ledgers comes in 0.75m, 1.00m, 1.25m, 1.50m, 2.00m and 2.50m.
- Adjustable base Jacks and Stirrup head are usually 450mm long with minimum 350mm threading and are made with 36 dia Pipe with Suitable nut.



Crane Climbing system

eximcorp - CCS Brackets & Shaft Platforms

- Climbing System is used for tall structures like cooling towers, tankages and core walls, where staging or scaffolding along the interior or exterior walls would prove uneconomical.
- In the Climbing System, brackets are hooked to anchors (lost anchors) already provided along the cast wall and supports, from where the shuttering is supported with alignments rests. The brackets will have necessary walkways, working platforms and handrail for safety and ease of work.
- Shaft Platforms with Climbing pawl attached to the main beams which can be shifted to next location using crane. The platforms will rest on the pockets left in RC Wall and will allow only upward movement when lifted with crane and locks automatically while comes to the pocket location.
- Travel climbing, crane handled - platform width 1.50 m /2.40m Roll back arrangement for de-shuttering and cleaning of shutters. The wall formwork and climbing bracket are lifted as one unit. This works with either Exim Classic or Exim MCK panel system.
- The application areas are mainly in high rise Residential & Commercial building sector.



FORMWORK BEAM DESCRIPTION

Formwork Beams comes with a unique end protection system.

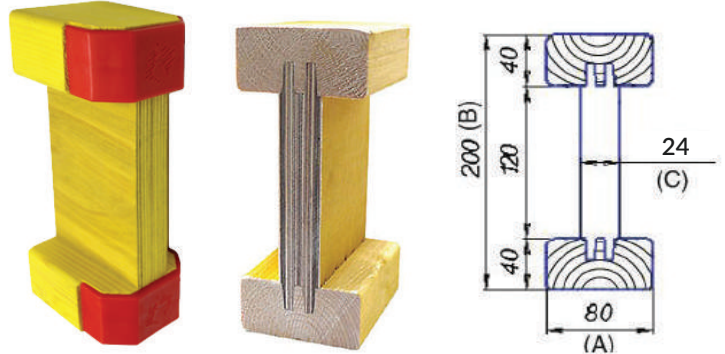
These modern beams comes with and without protected ends, are intended for use as load-bearing structures for the formwork of floors of any thickness and walls of buildings and structures for various purposes.

The plywood wall of the beams with a thickness of 24 mm beams is made from the finest Birch / Spruce plywood.



Specifications – H20 Formwork Beam

- Standard Length - 2.50; 2.90; 3.00; 3.30; 3.60; 3.90; 4.50; 5.90 m (any additional lengths are possible for a specific project or according to the customer's request but not more than 6.2 m);
- Depth - 200 mm;
- Flange width - 80 mm;
- Thickness of the Flange - 40 mm;
- Web thickness - 24 mm;
- Weight - 5 kg / rmt;
- Allowable bending moment $M = 5 \text{ kNm}$;
- Permissible Shear force $Q = 11 \text{ kN}$
- Flexural Rigidity $EI = 450 \text{ KN M}^2$
- Confirms to equivalent of EN13377.



H - 20

Plywood

Shuttering ply is one of our primary business units wherein, we have been serving for a long period to the construction market in India. Our shuttering plywood is imported from Russia and is known for best quality finish and its specifications.

Types of Plywood - *eximcorp Birchply* ○○○

Birchply is a high quality film faced ply with smooth surface and uniform thickness. It complies with European (E1) standard.

Availability Options

- Film face Birch Plywood is made in a range of thickness from 6mm to 40mm with films of 120 gsm and 220 gsm with and without logo on film surface.

- However, the regularly available plywood thickness is 12mm x 9 ply & 18mm x 13 ply.

- The most commonly available dimension is 2440mm x 1220mm having a 120 gsm film in 9mm and 12mm and 220 gsm film in 18mm thickness. Special size of 1525mm x 3050mm x 9mm & 12mm is also available with prior arrangement in both 120 gsm and 220 gsm film.



Technical specifications

Parameters	Values
Density kg/cubic meter	640-700
Moisture Content %	8-10
Minimum Ultimate strength MPa	
Shear along the glue layer	1.5
Static bending along the grain (Outer layer)	25
Tension along the grain	30
Minimum elastic module, MPa	7000

Number of cycles

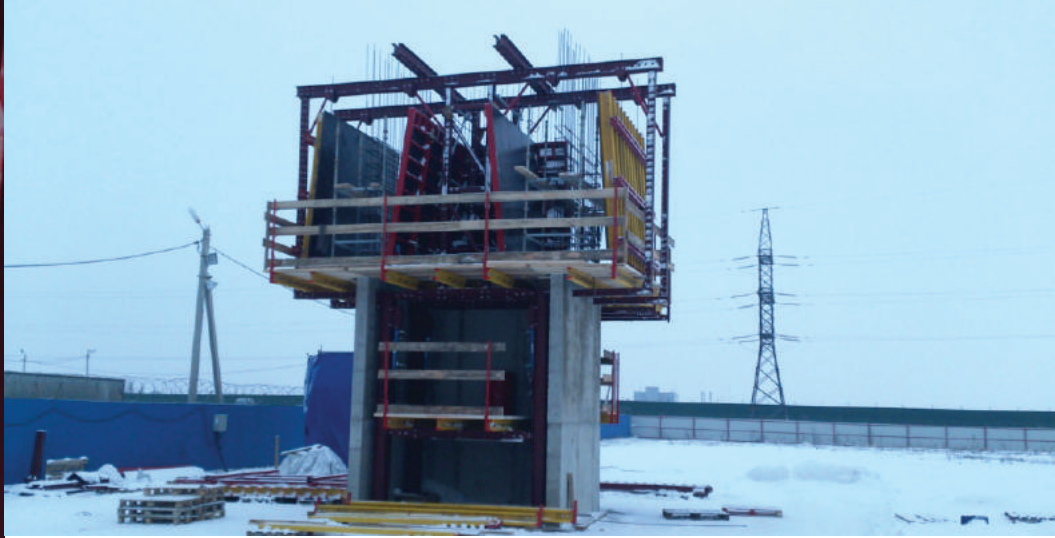
The Plywood remaining delamination free could be used over 40 times (non-binding) in modular forms such as paneled system for Vertical applications or Table forms in Horizontal applications, based on our experiences gained over the period of times. The possible number of use cycles depends on a multiplicity of external influences acting on the plywood. These ply are used primarily to meet high requirements for the surface of fair-face concrete. The number of reuses for high-quality concrete faces, however, depends on the treatment received by the plywood. The repetitions of use will be reduced if minor damage, nail-holes, cut edges and holes drilled in the plywood are not sealed.

eximcorp - PROPS

Props which can be used for Horizontal as well as Vertical Formwork for alignment with double nut and also a single nut provisions covers the entire range from 0.90m to 5.00m.

Props come with Galvanized finish which enhances its life. Our props provides you utmost safety, high quality and excellent load carrying capacities.





Eximcorp India Pvt. Ltd.,

X-11 Park Tower, 1st Floor, Anna Nagar, Chennai – 600 040 Tamilnadu, India

Phone: +91 44 4550 0020 Fax: +91 44 4550 0067

www.eximcorp.co.in

Delhi: 88/14-17 Mundka Industrial Area, Road No. 12, Delhi Rohtak Road, New Delhi 110 041 Phone: +91 11 4166 2489, Fax: +91 11 4106 3444,

Mobile: +91 98910 38202 | E-mail: public@eximcorp.co.in

Kolkatta: 25, RN Mookherjee Road, Mission Court, 4th Floor, Suite C, Kolkatta– 700001, WestBengal, India Phone: +91 33 22488738, 2243 5872

Fax: +91 33 2248 9943 E-mail: info@eximcorp.co.in

Ahemdabad: 1&2, Bhagwati Estate, Bavla Road, Sarkhej, Ahemedabad – 382 210, Gujarat, India Phone: +91 99100 77604, 98240 38900

E-mail: info@eximcorp.co.in

“FOR INFORMATION PURPOSE ONLY” Neither we are liable nor responsible if any product data contained in this catalogue is used which is not fit for the purpose of use. None of the information can be copied or used without express prior written consent.